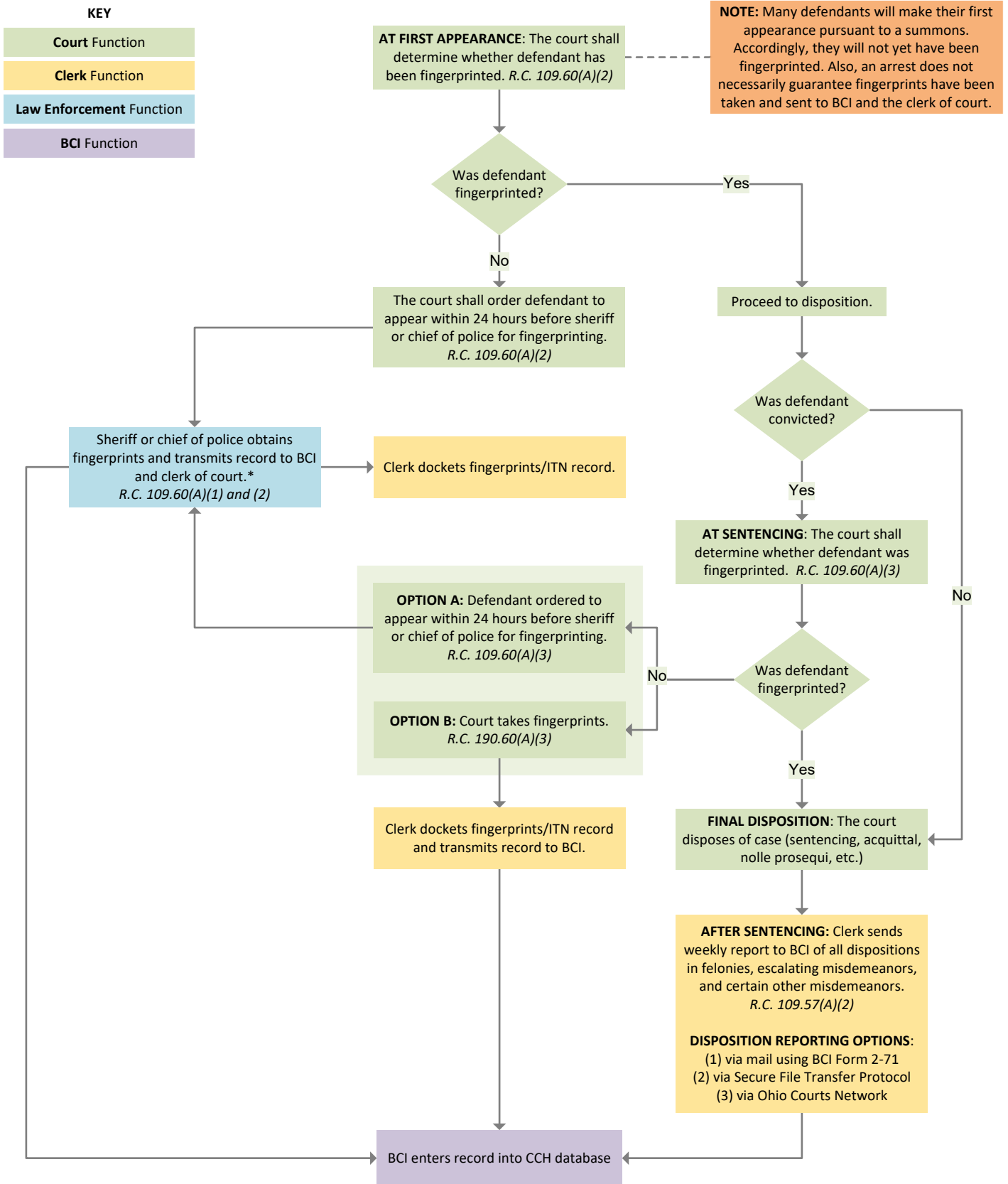


Adult Criminal History Reporting to the Bureau of Criminal Investigation

Overall Process and Information Flow



* If a court of common pleas orders a defendant to appear for fingerprints and defendant fails to appear, the sheriff or chief of police shall notify court. R.C. 2301.10(C)

Abbreviations

- BCI – Bureau of Criminal Investigation
- CCH – Computerized Criminal History
- ITN – Incident Tracking Number