

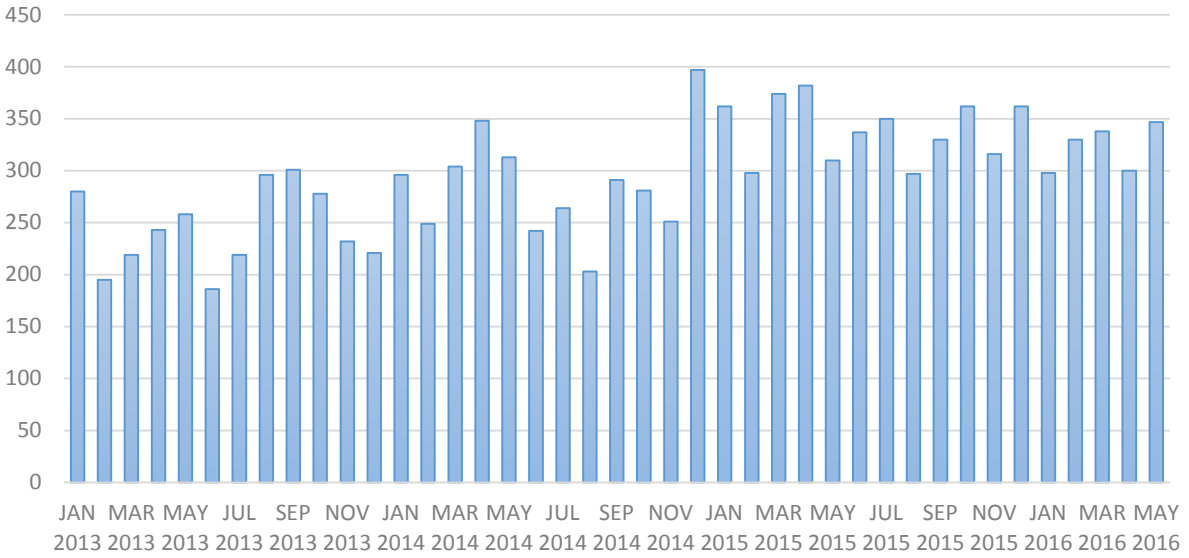
Sentencing & Criminal Justice Committee ODRC
Transitional Control Update

sara andrews

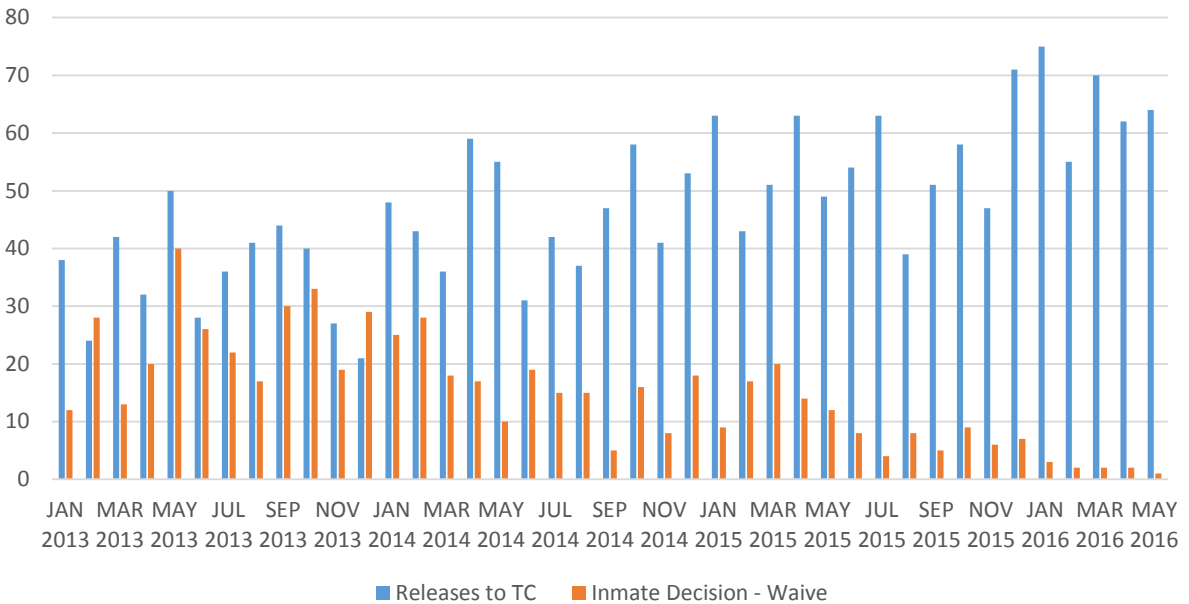
ODRC, BUREAU OF RESEARCH AND EVALUATION



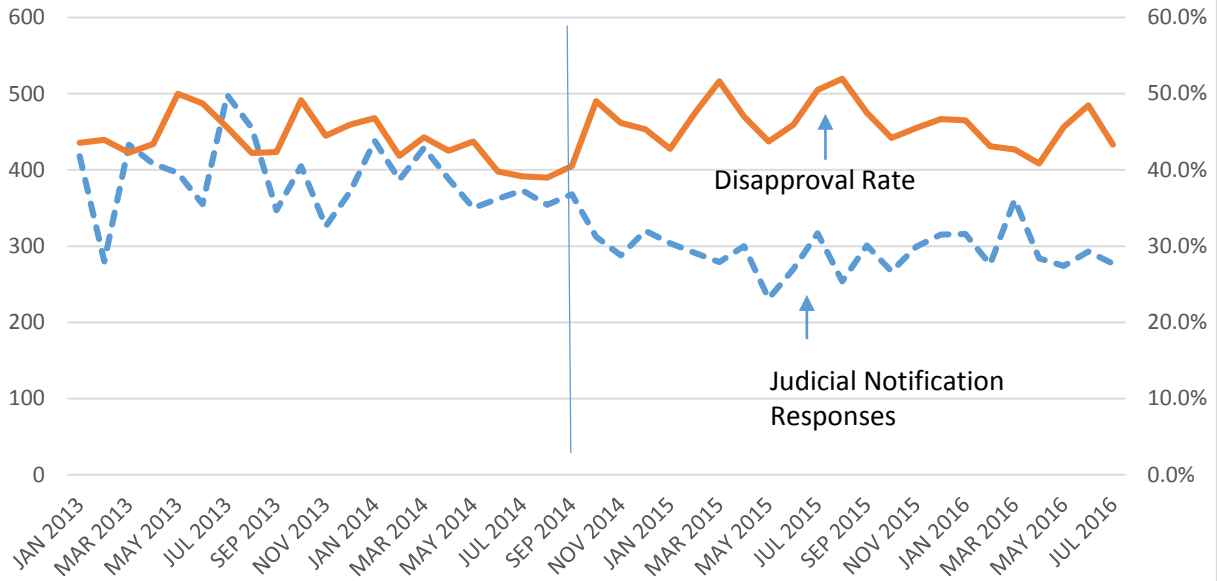
Releases to TC, Jan 2013 - May 2016



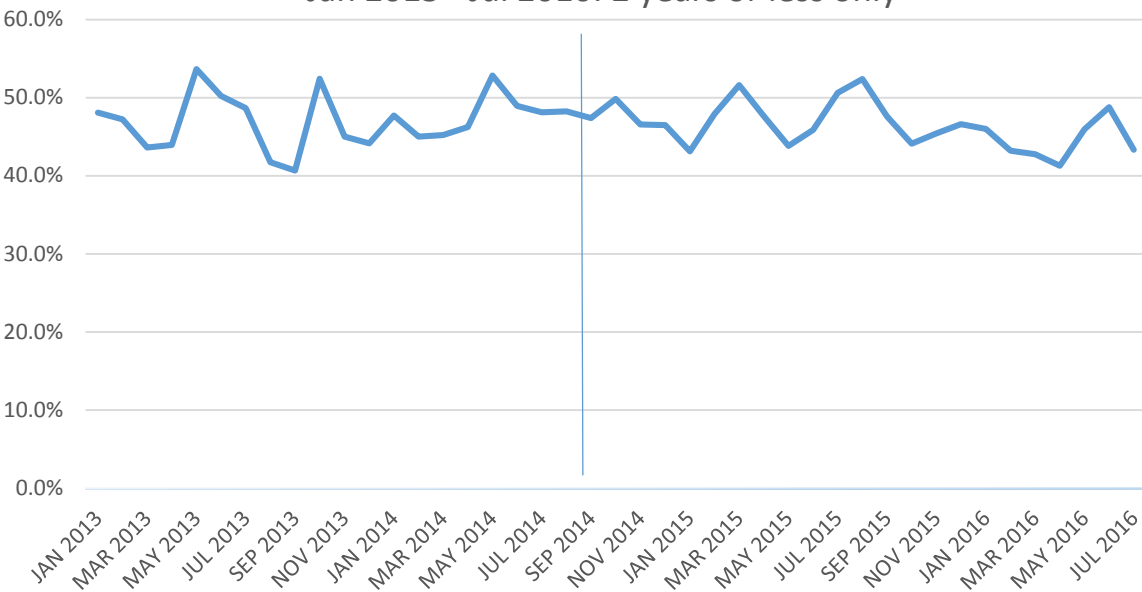
Female Releases to TC and Number Waiving Participation, Jan 2013 - May 2016



Rate of Judicial Disapproval among TC Release Notification Responses, Jan 2013 - Jul 2016



Rate of Judicial Disapproval among TC-eligible Inmates, Jan 2013 - Jul 2016: 2 years or less only



Judicial Disapproval Rates among Transitional Control Release Notification Responses, by County, FY 2015-FY 2016						
County	FY 2015			FY 2016		
	Release Notification Responses	Disapproved	Disapproval Rate (among responses)	Release Notification Responses	Disapproved	Disapproval Rate (among responses)
ADAMS	26	24	92.3%	44	40	90.9%
ALLEN	32	14	43.8%	25	15	60.0%
ASHLAND	18	14	77.8%	19	17	89.5%
ASHTABULA	27	7	25.9%	34	18	52.9%
ATHENS	14	9	64.3%	8	4	50.0%
AUGLAIZE	17	9	52.9%	14	2	14.3%
BELMONT	17	9	52.9%	14	5	35.7%
BROWN	44	32	72.7%	25	18	72.0%
BUTLER	160	46	28.8%	138	21	15.2%
CARROLL	2	0	0.0%	7	4	57.1%
CHAMPAIGN	22	2	9.1%	27	7	25.9%
CLARK	75	70	93.3%	48	38	79.2%
CLERMONT	90	19	21.1%	60	15	25.0%
CLINTON	28	7	25.0%	32	8	25.0%
COLUMBIANA	8	3	37.5%	11	5	45.5%
COSHOCTON	22	0	0.0%	15	0	0.0%
CRAWFORD	6	1	16.7%	21	4	19.0%
CUYAHOGA	431	217	50.3%	395	179	45.3%
DARKE	6	0	0.0%	10	1	10.0%
DEFIANCE	21	6	28.6%	19	4	21.1%
DELAWARE	38	4	10.5%	23	4	17.4%
ERIE	33	15	45.5%	50	32	64.0%
FAIRFIELD	39	29	74.4%	30	27	90.0%
FAYETTE	15	7	46.7%	21	8	38.1%
FRANKLIN	178	53	29.8%	149	85	57.0%
FULTON	15	2	13.3%	16	0	0.0%
GALLIA	37	36	97.3%	30	30	100.0%
GEAUGA	7	3	42.9%	6	4	66.7%
GREENE	60	5	8.3%	36	5	13.9%
GUERNSEY	28	3	10.7%	17	1	5.9%
HAMILTON	243	135	55.6%	240	136	56.7%
HANCOCK	29	3	10.3%	17	1	5.9%
HARDIN	8	4	50.0%	11	9	81.8%
HARRISON	4	2	50.0%	4	1	25.0%
HENRY	9	2	22.2%	5	1	20.0%
HIGHLAND	49	0	0.0%	50	1	2.0%
HOCKING	13	9	69.2%	6	3	50.0%
HOLMES	0	0	n/a	1	0	0.0%
HURON	22	6	27.3%	39	9	23.1%
JACKSON	17	17	100.0%	23	23	100.0%
JEFFERSON	16	12	75.0%	14	14	100.0%
KNOX	22	2	9.1%	27	2	7.4%
LAKE	30	6	20.0%	27	12	44.4%
LAWRENCE	47	32	68.1%	50	45	90.0%
LICKING	114	43	37.7%	83	34	41.0%
LOGAN	10	7	70.0%	15	11	73.3%
LORAIN	38	2	5.3%	27	3	11.1%
LUCAS	82	53	64.6%	66	40	60.6%
MADISON	20	18	90.0%	17	16	94.1%
MAHONING	85	21	24.7%	76	28	36.8%
MARION	36	3	8.3%	49	4	8.2%
MEDINA	45	9	20.0%	71	23	32.4%
MEIGS	2	2	100.0%	0	0	n/a
MERCER	16	0	0.0%	13	1	7.7%
MIAMI	14	8	57.1%	40	36	90.0%
MONROE	11	10	90.9%	14	14	100.0%
MONTGOMERY	195	161	82.6%	207	147	71.0%
MORGAN	2	2	100.0%	4	4	100.0%
MORROW	4	3	75.0%	9	5	55.6%
MUSKINGUM	45	42	93.3%	48	41	85.4%
NOBLE	1	0	0.0%	3	0	0.0%
OTTAWA	5	3	60.0%	8	2	25.0%
PAULDING	10	8	80.0%	9	5	55.6%
PERRY	12	10	83.3%	8	8	100.0%
PICKAWAY	50	9	18.0%	39	1	2.6%
PIKE	6	1	16.7%	6	0	0.0%
PORTAGE	25	18	72.0%	45	40	88.9%
PREBLE	18	12	66.7%	19	9	47.4%
PUTNAM	3	1	33.3%	4	1	25.0%
RICHLAND	96	23	24.0%	107	35	32.7%
ROSS	49	13	26.5%	51	11	21.6%
SANDUSKY	11	4	36.4%	12	8	66.7%
SCIOTO	16	4	25.0%	8	1	12.5%
SENECA	21	10	47.6%	20	6	30.0%
SHELBY	48	1	2.1%	48	2	4.2%
STARK	141	107	75.9%	116	86	74.1%
SUMMIT	168	31	18.5%	180	38	21.1%
TRUMBULL	68	47	69.1%	70	45	64.3%
TUSCARAWAS	3	0	0.0%	11	5	45.5%
UNION	4	1	25.0%	1	0	0.0%
VAN WERT	10	0	0.0%	9	3	33.3%
VINTON	6	4	66.7%	8	8	100.0%
WARREN	47	8	17.0%	65	3	4.6%
WASHINGTON	22	13	59.1%	22	11	50.0%
WAYNE	25	5	20.0%	24	1	4.2%
WILLIAMS	9	7	77.8%	12	10	83.3%
WOOD	37	21	56.8%	24	12	50.0%
WYANDOT	14	12	85.7%	19	14	73.7%
Total	3669	1633	44.5%	3545	1630	46.0%

Rate of Return for Admin Rule 7 Violations, Jan 2013 - Dec 2015 Releases to TC (6 month follow up)

